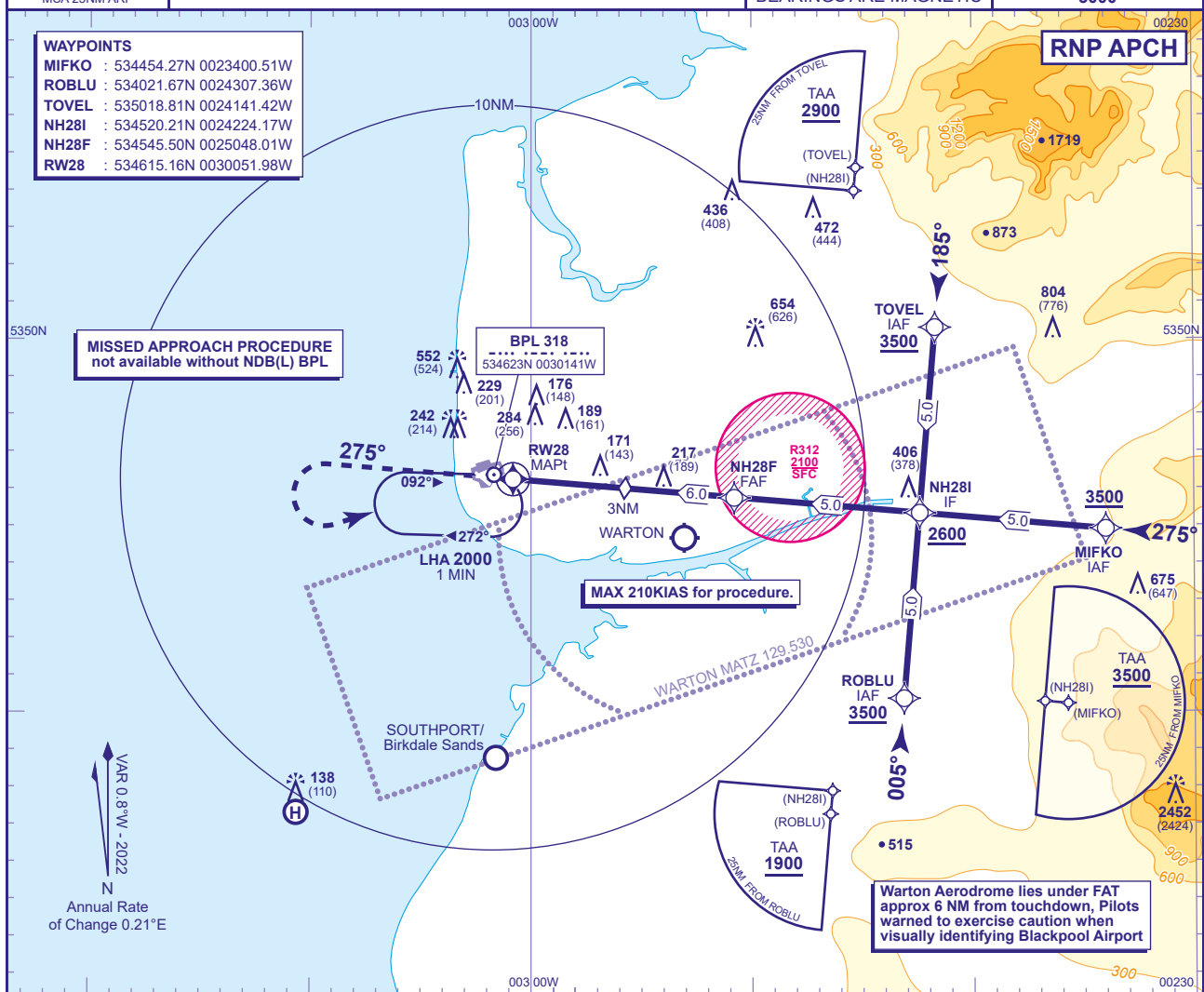


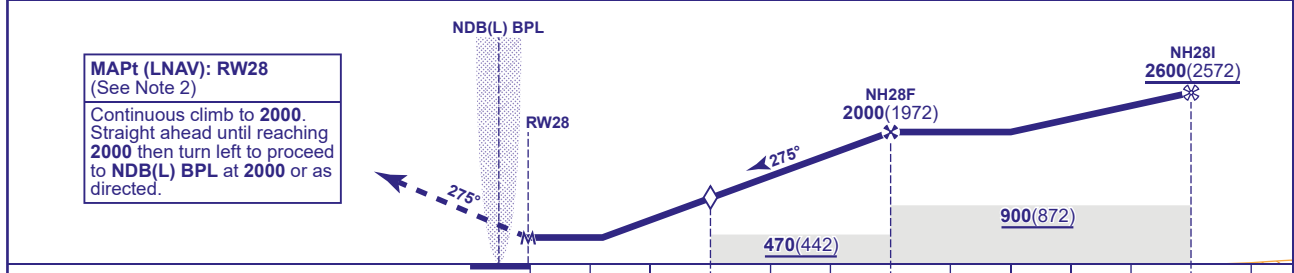
**BLACKPOOL**  
**RNP**  
**RWY 28**  
(ACFT CAT A,B,C,D)

APP	119.955	BLACKPOOL APPROACH	AD ELEVATION <b>34</b>
TWR	119.955	BLACKPOOL TOWER	THR ELEVATION <b>28</b>
ATIS	127.205	BLACKPOOL INFORMATION	OBSTACLE ELEVATION <b>2452 AMSL</b> (2424) (ABOVE THR)
			BEARINGS ARE MAGNETIC

TRANSITION ALTITUDE  
**3000**



RECOMMENDED PROFILE Gradient 5.3%, 323FT/NM					
NM to RW28	6	5	4	3(SDF)	2
ALT(HGT)	2000(1972)	1680(1652)	1360(1332)	1040(1012)	720(692)



						0NM	3	6			11	
Aircraft Category		A	B	C	D	Rate of descent	G/S KT	160	140	120	100	80
OCA (OCH)	LNAV	420(392)	420(392)	420(392)	420(392)		FT/MIN	861	746	640	533	426
VM(C)OCA (OCH AAL)	Total Area	580(546)	830(796)	930(896)	930(896)							
	South of RWY 10/28	N/A	N/A	N/A	N/A							

**NOTE 1** Aircraft not permitted below **1670** over EGR312 for the purpose of landing at Blackpool. Recommended profile **MANDATORY**.  
**2** Missed Approach Procedure shall be converted to a conventional Missed Approach upon reaching **2000**.